

F|S

FABRICS-STORE.COM

Our linen is nothing short of addicting

LEENA DRESS



FLIRTY RUFFLES

There's something so delicate and precious about the dainty movement of ruffles that flutter in the breeze... this dress will make a delightfully feminine wardrobe addition.

Available in Ladies Sizes 0/2 to 28/30

866.620.2008 ASK@FABRICS-STORE.COM FABRICS-STORE.COM

LEENA PATTERN

Our mid-calf linen dress with flirty ruffle sleeves is perfectly simple yet romantic and sophisticated. Perfect for everyday wear or special occasions.

Sized for ladies 0/2 to 28/30

*Simple step-by-step instructions on our blog
The Thread at Fabrics-Store.com*

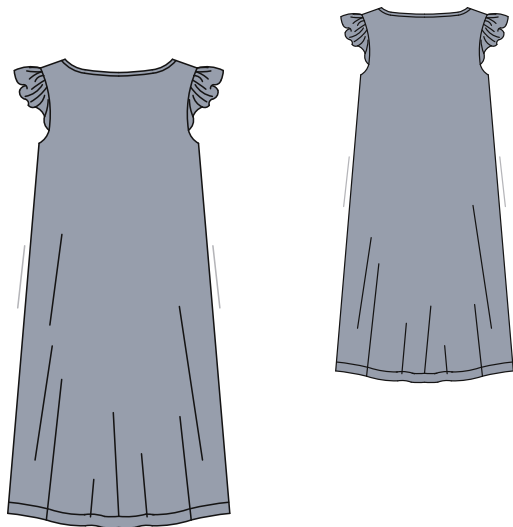
MASHA IS WEARING IL019 ASPHALT FS SIGNATURE FINISH MEDIUM WEIGHT LINEN.



Our lovely model Masha is wearing Size 4/6.

PATTERN DETAILS

#FABRICSSTORELEENAPATTERN



LEENA PATTERN

Ladies Duo Sizes: 0/2 to 28/30

- A-line calf-length dress.
- Semi-fitted.
- Neck/armhole facing.
- Ruffled cap sleeves.
- Inseam pockets.

SEWING INSTRUCTIONS

This pattern is featured on our blog “The Thread” at Fabrics-Store.com. There you will find step-by-step photo instructions and can ask questions, post comments, or share your progress. Simply visit: blog.fabrics-store.com and enter “Leena Pattern” in the search box.

SIZING & YARDAGE

Ladies Size Guide Based on Body Measurements in Inches

Size	0/2	4/6	8/10	12/14	16/18	20/22	24/26	28/30
Bust	33-34	35-36	37-38	39-40	42-44	46-48	50-52	54-56
Waist	25-26	27-28	29-30	31-32	34-36	38-40	42-44	46-48
Hip	35-36	37-38	39-40	41-42	44-46	48-50	52-54	56-58

Finished Garment Measurements - Approximate in Inches

Size	0/2	4/6	8/10	12/14	16/18	20/22	24/26	28/30
Bust	35	37	39.5	42	46	50	54.5	59
Waist	39.25	41.25	43.75	46.25	50.25	54.25	58.75	63.25
Hips	43.5	45.5	48	50.5	54.5	58.5	63	67.5
Garment Length	39 7/8	40.5	41 1/8	41 3/4	42 3/8	43	43 5/8	44 1/4

Estimated Yardage* - 54" Width Linen

Size	0/2	4/6	8/10	12/14	16/18	20/22	24/26	28/30
Yardage Bodice	2 Yards				3 Yards			

*Allow up to 10% extra fabric for shrinkage.

ALL SEAM ALLOWANCES ARE INCLUDED AND NOTED ON THE PATTERN AND IN THE TUTORIAL.

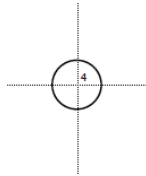
“Leena” Sewing Pattern

For instructions visit: blog.fabrics-store.com and enter “Leena Pattern” in the search box.

2 Inch
Square to
Check Print
Accuracy

PRINT ONLY THIS PAGE FIRST TO CHECK SCALE
IMPORTANT! PRINT AT ACTUAL SIZE, 100%, OR NO SCALING.

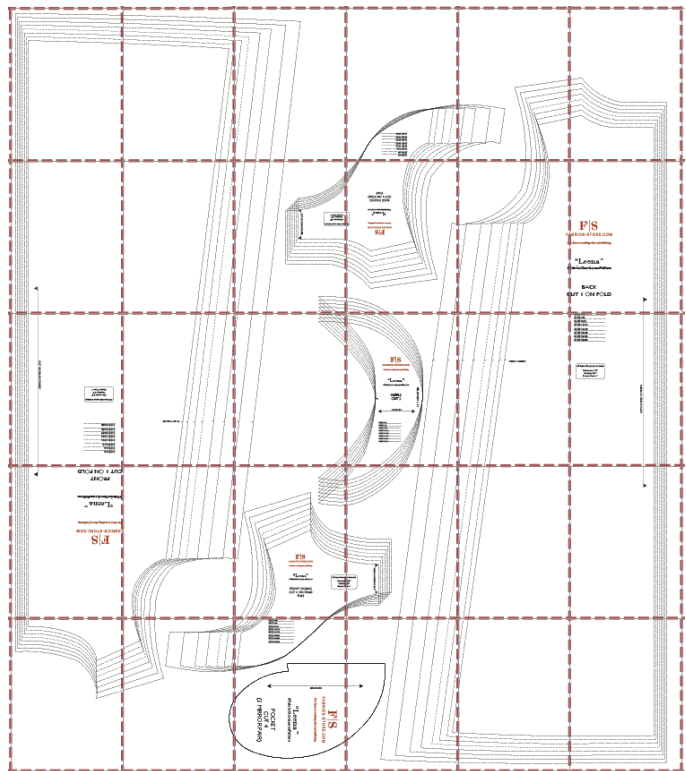
Formatted for paper sizes A4 and Letter.



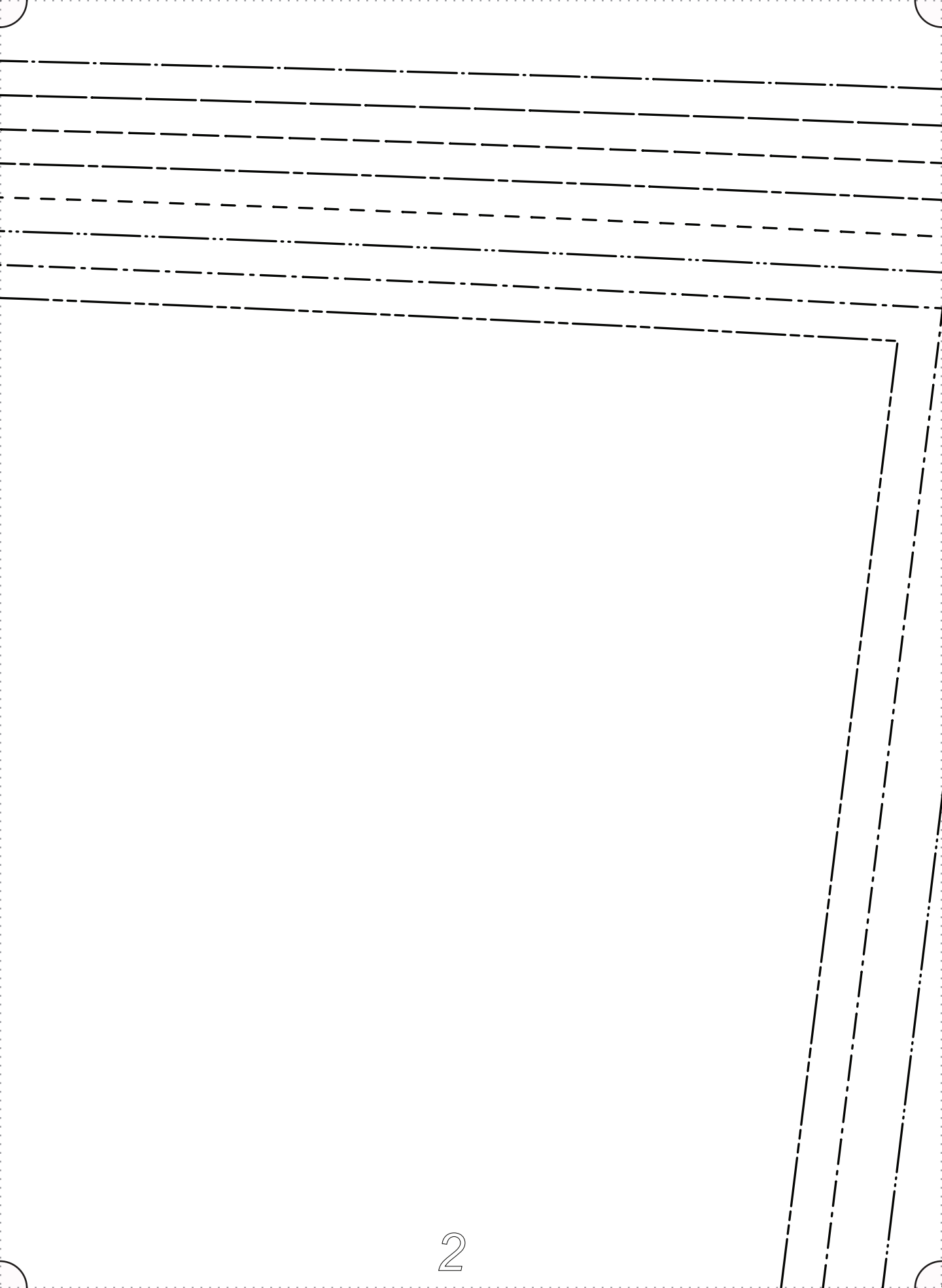
Simply overlap the page margins and align the markings in each corner to complete the circle and tape in place.

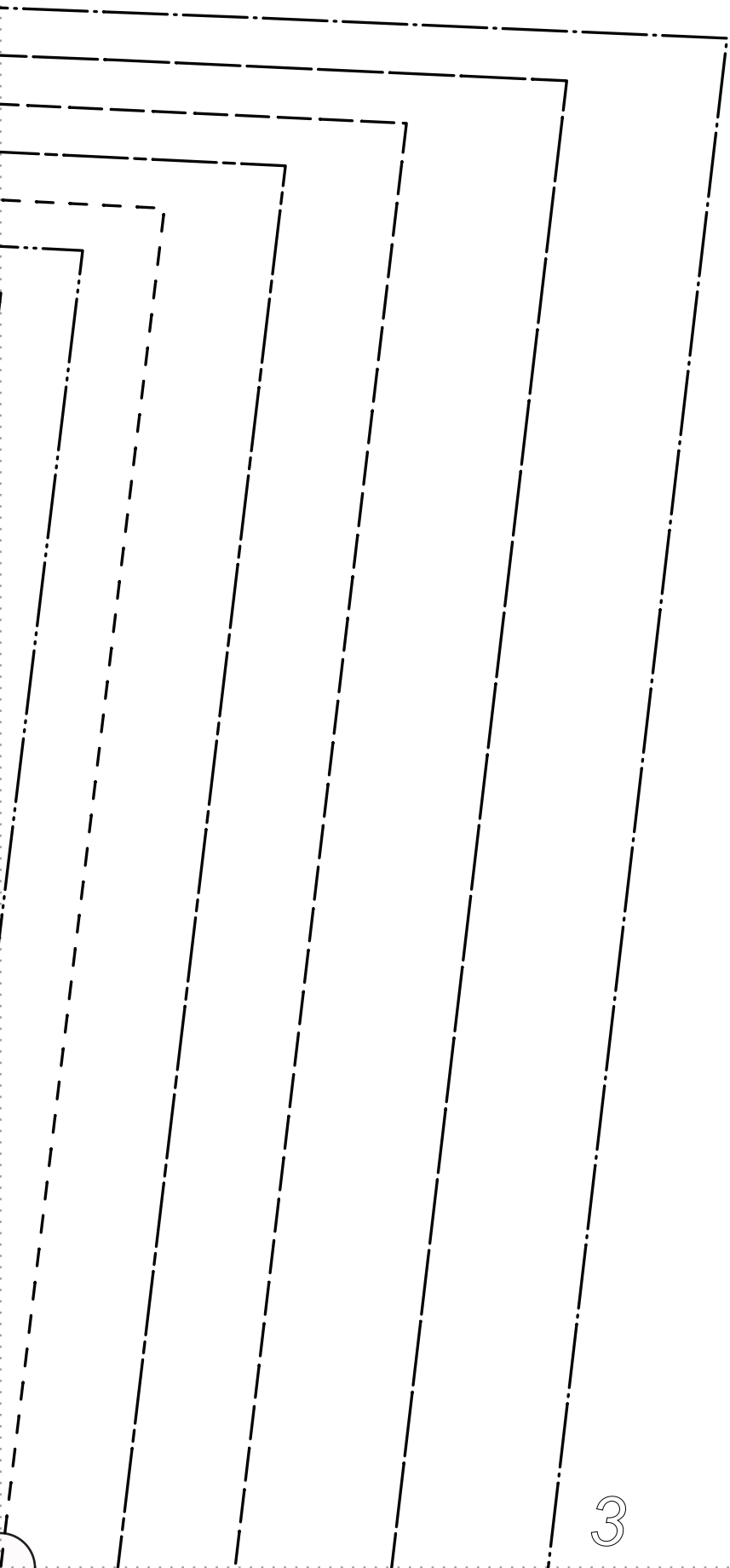
Layered PDF:

This pattern has embedded layers so you can print all sizes or a single size. See your .pdf viewers 'Layers' menu.



For instructions visit: blog.fabrics-store.com and enter “Leena Pattern” in the search box.





4

SIZE 0/2

SIZE 4/6

SIZE 8/10

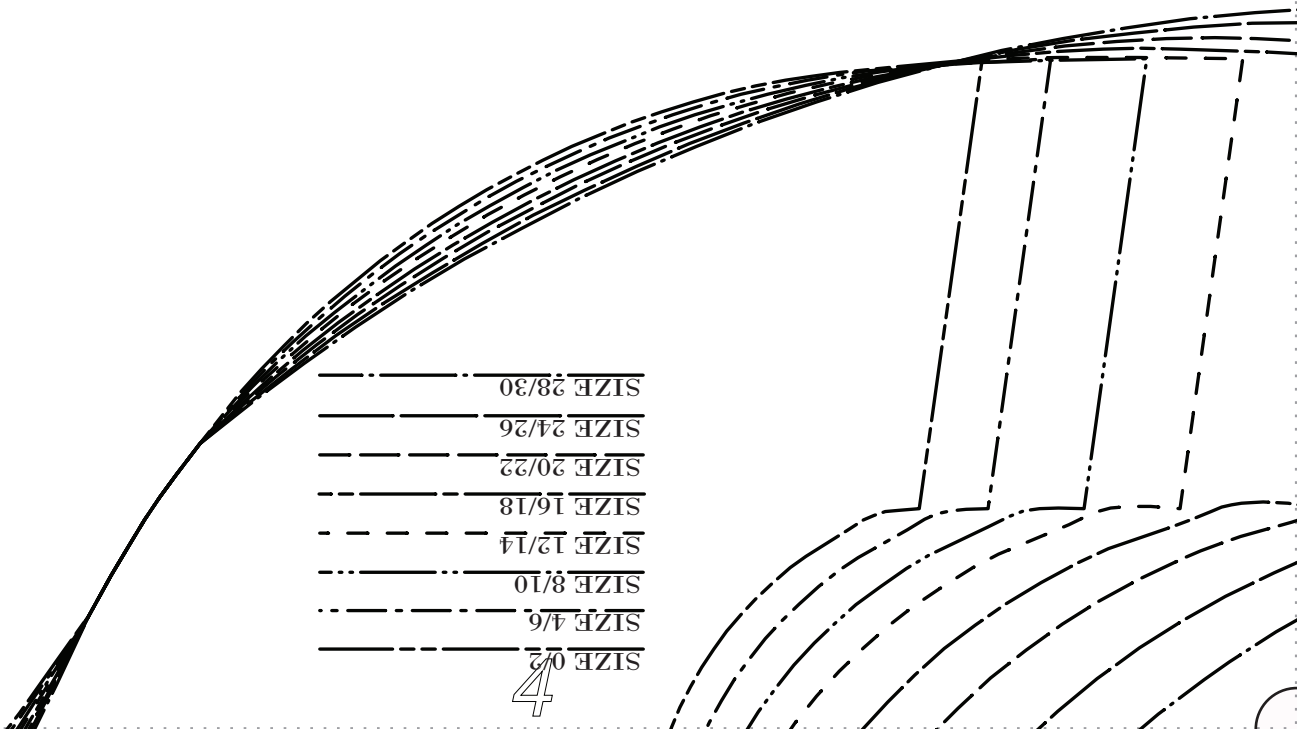
SIZE 12/14

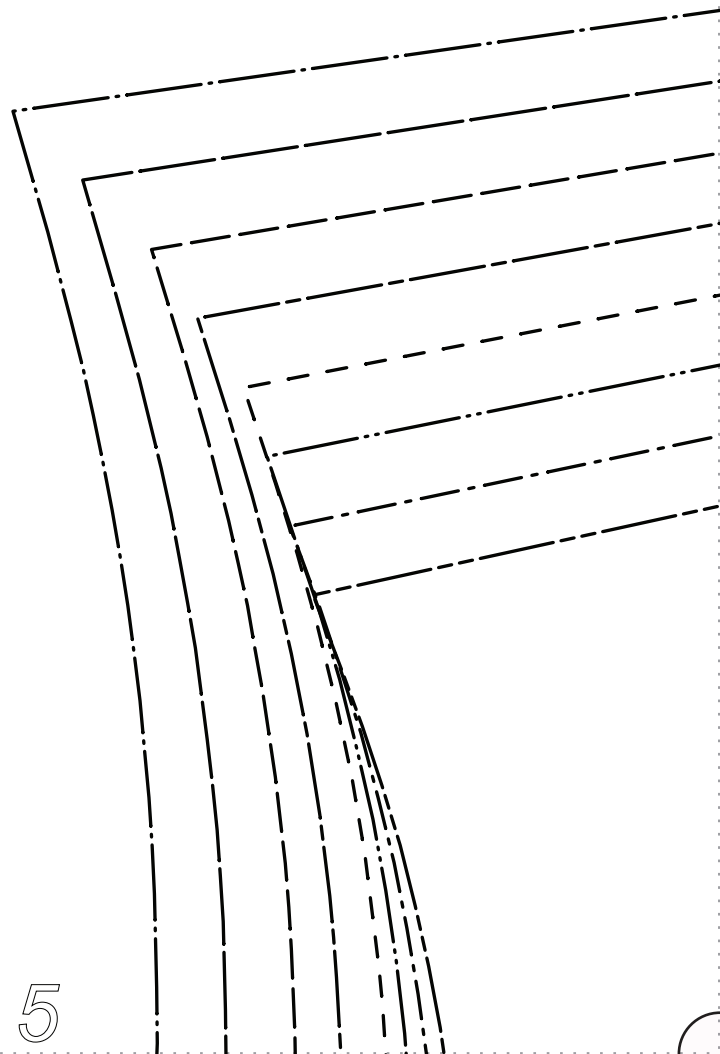
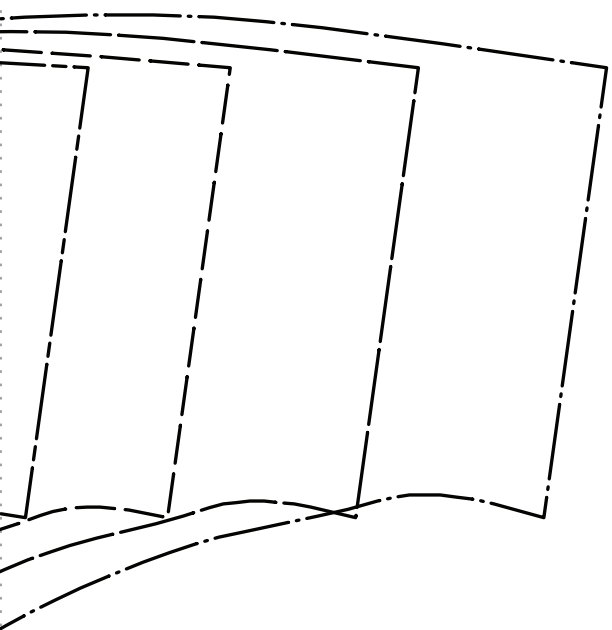
SIZE 16/18

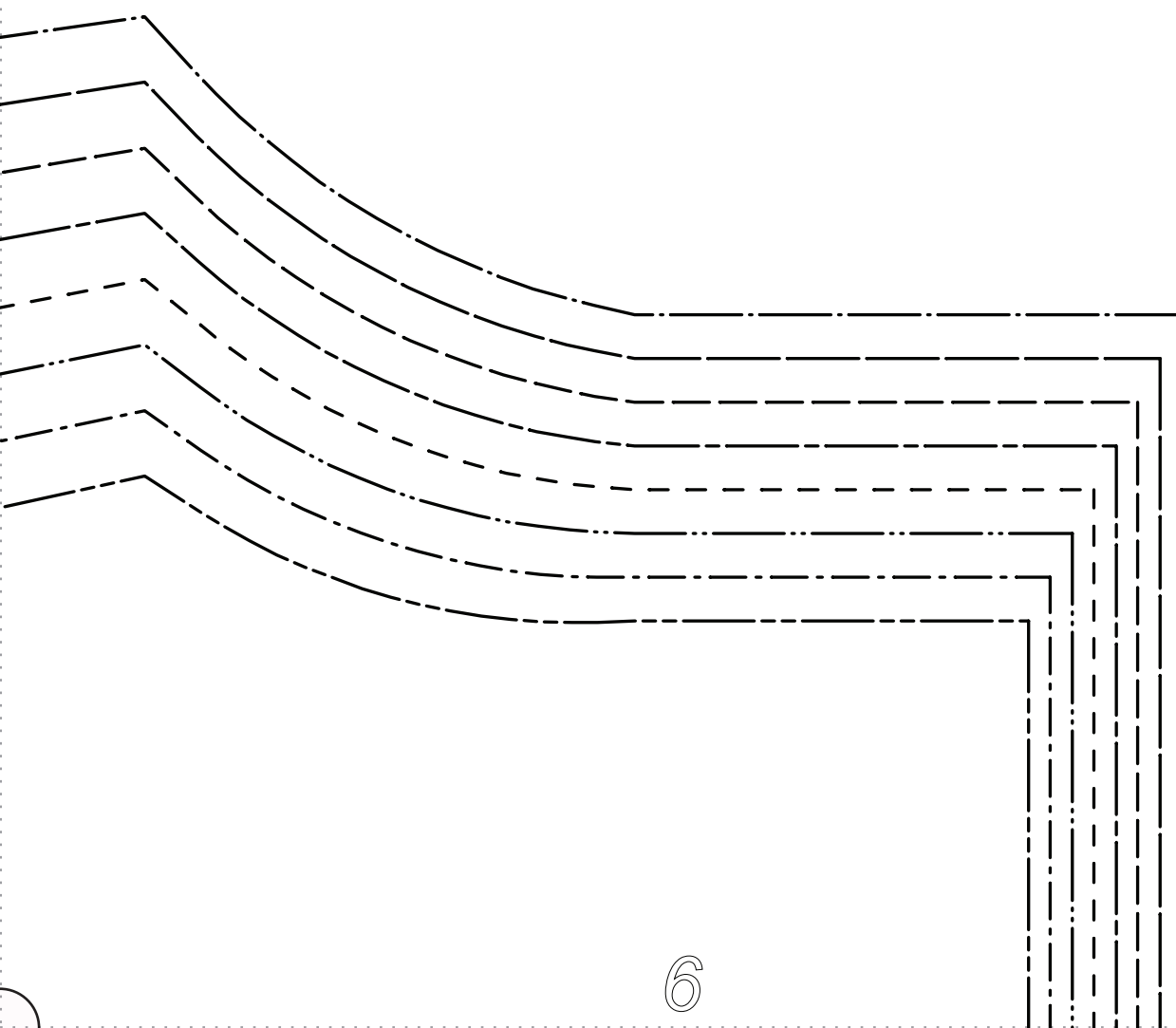
SIZE 20/22

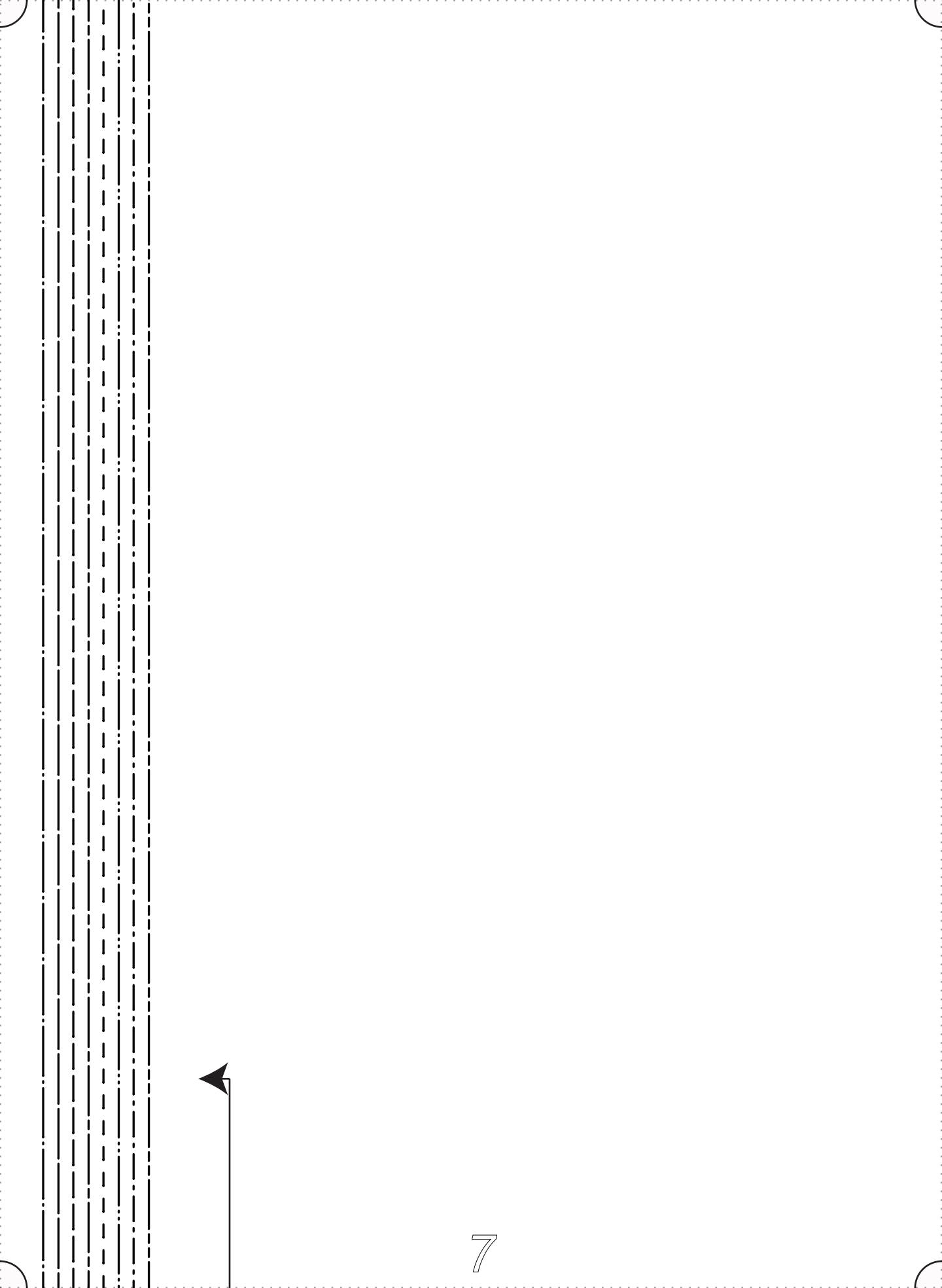
SIZE 24/26

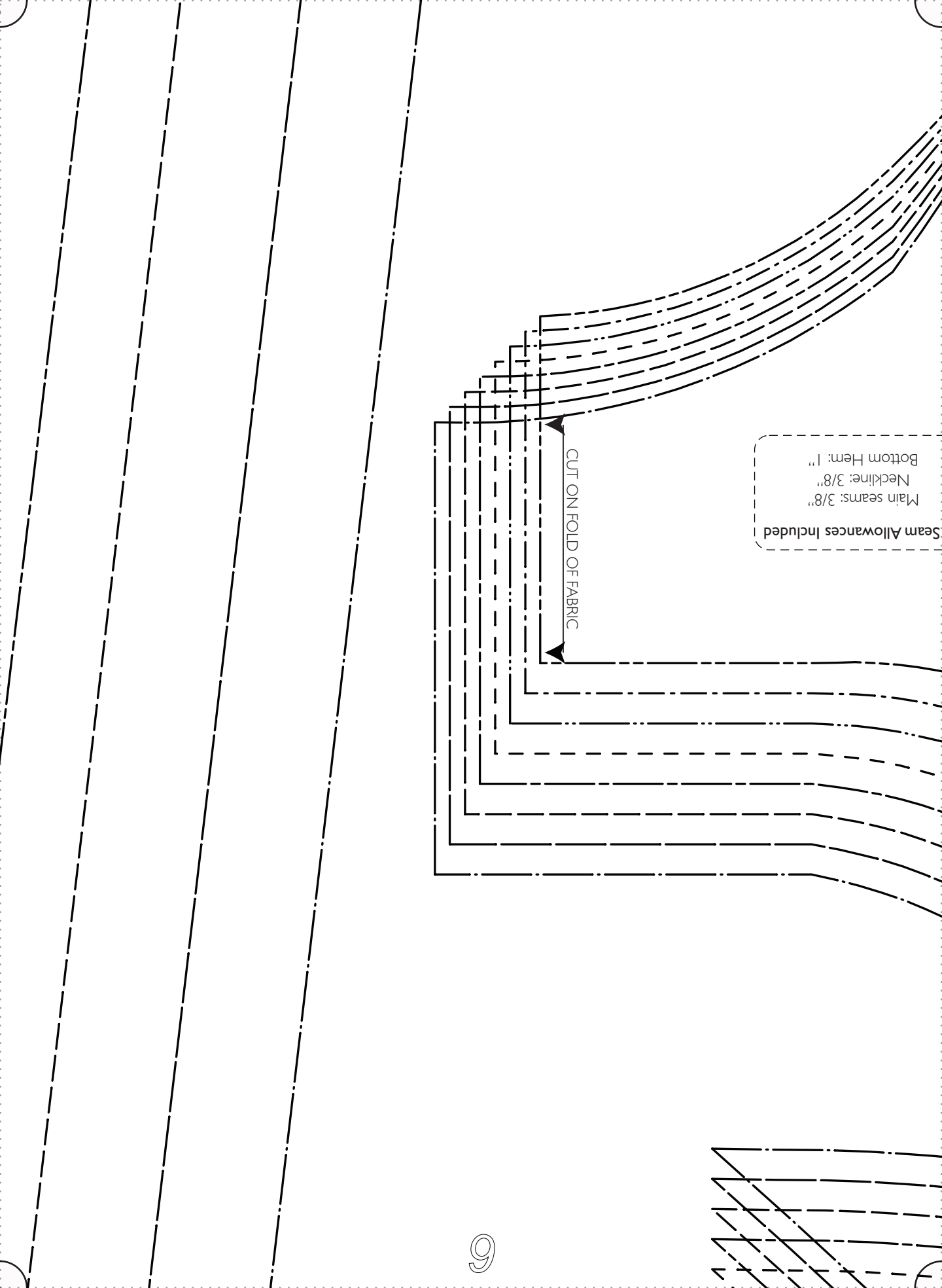
SIZE 28/30











Seam Allowances Included
Main seams: 3/8"
Neckline: 3/8"
Bottom Hem: 1"

CUT ON FOLD OF FABRIC

BACK FACING
CUT 1 ON FOLD
FUSE

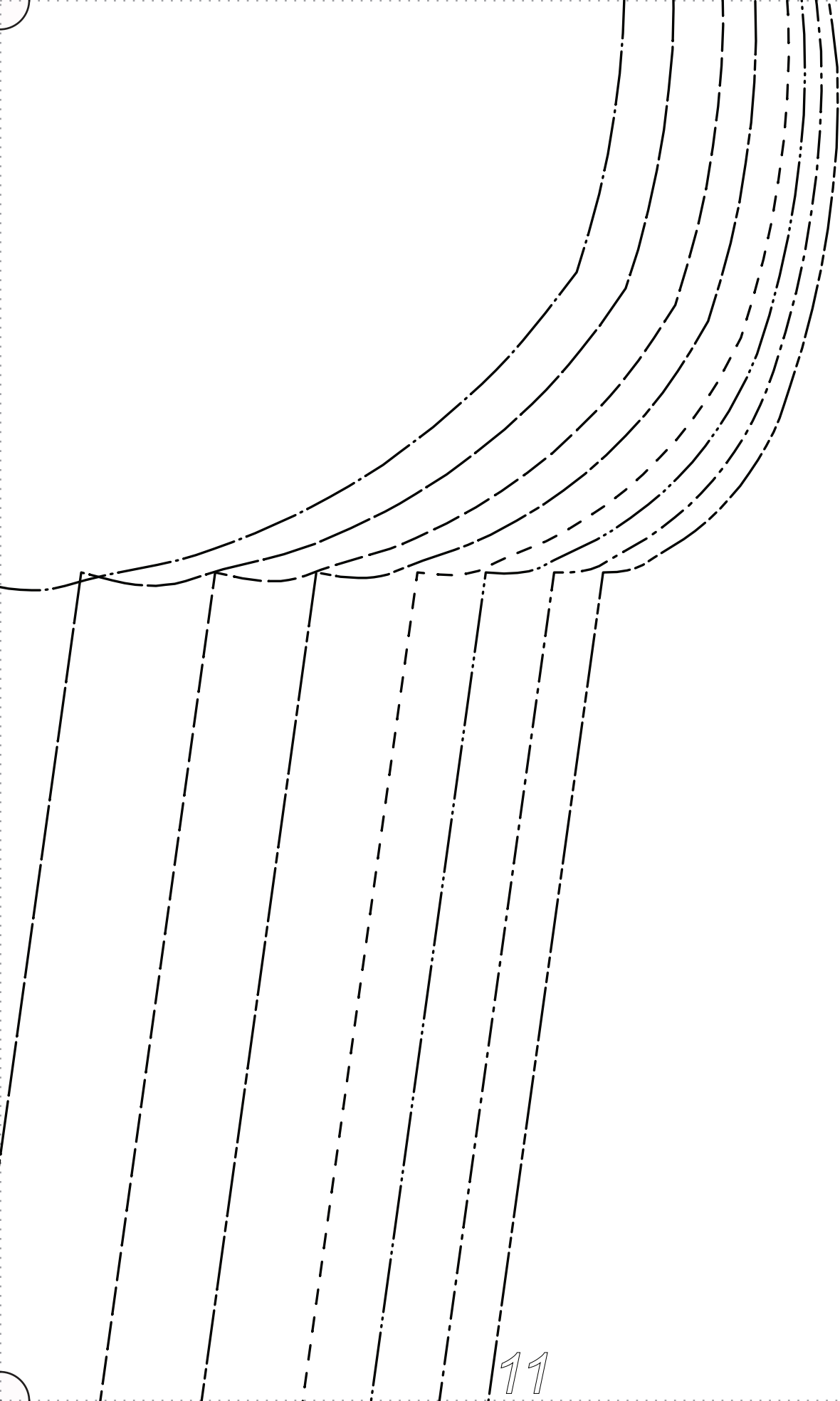
#FabricStoreLeenaPattern

“Leena”

Our linen is nothing short of addicting

FABRICS-STORE.COM

F|S



FA

o

#

C

F|S

FABRICS-STORE.COM

Our linen is nothing short of addicting

“Leena”

FabricsStoreLeenaPattern

BACK
CUT 1 ON FOLD

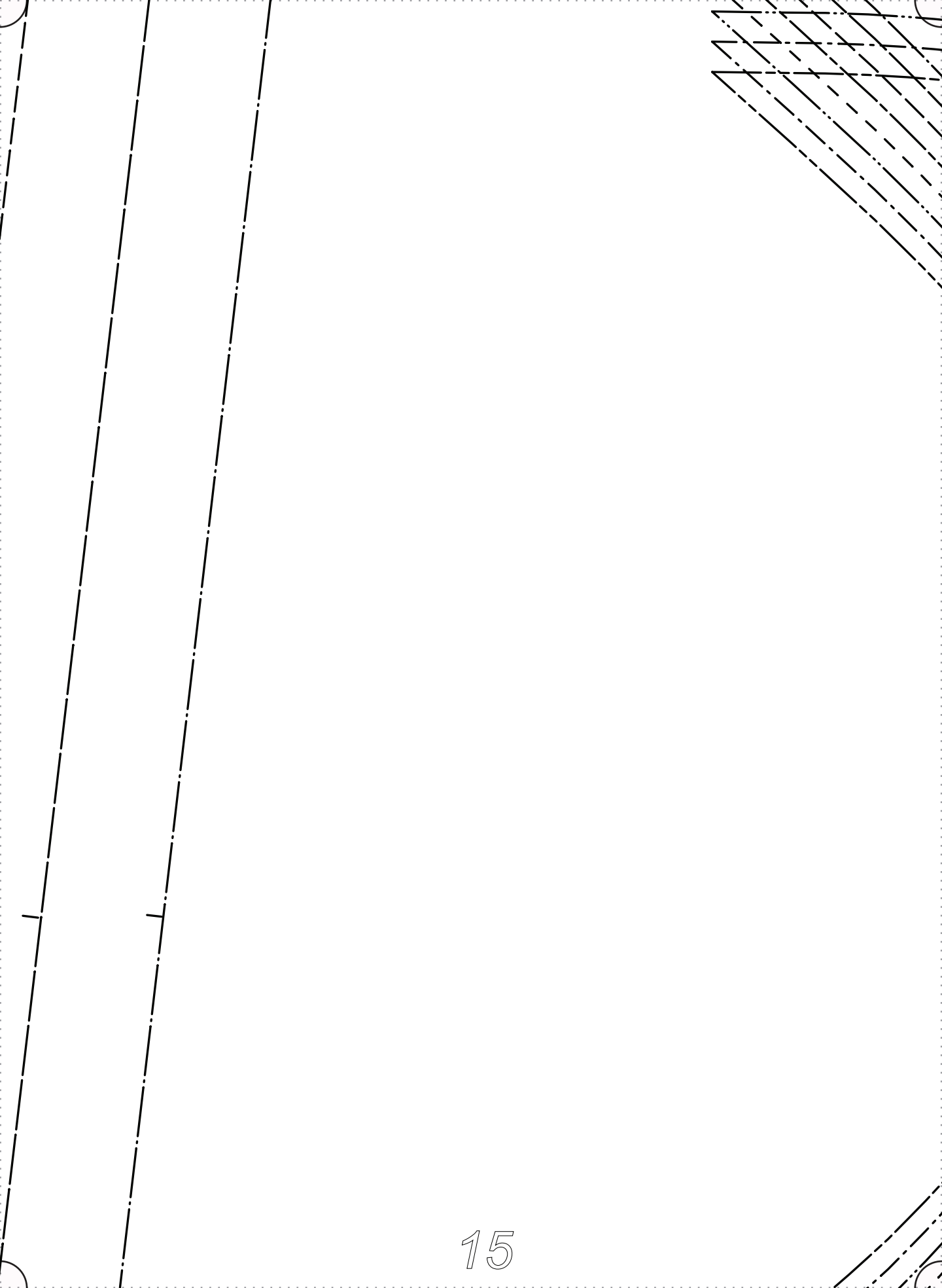


CUT ON FOLD OF FABRIC

All Seam Allowances Included
Main seams: 3/8"
Neckline: 3/8"
Bottom Hem: 1"

SIZE 0/2
SIZE 4/6
SIZE 8/10
SIZE 12/14
SIZE 16/18
SIZE 20/22
SIZE 24/26
SIZE 28/30

POCKET PLACEMENT



F|S

FABRICS-STORE.COM

Our linen is nothing short of addicting

“Leena”

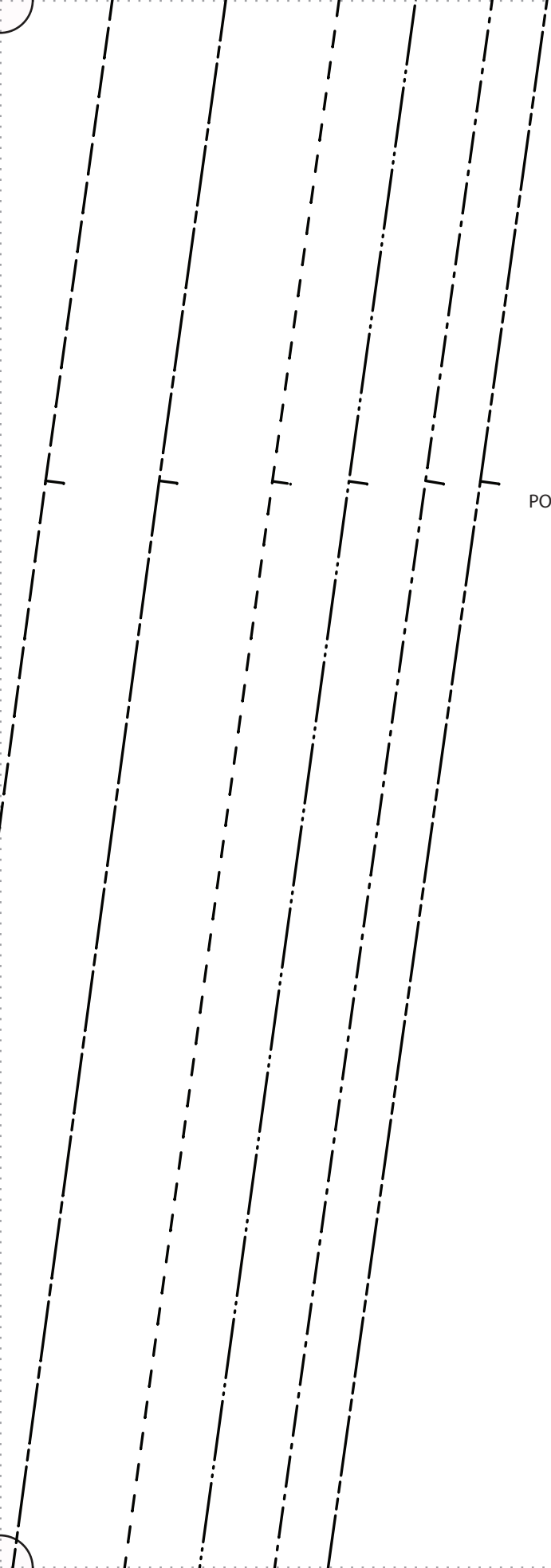
#FabricStoreLeenaPattern

RUFFLE
CUT 2

1/2" S.A. FOR BABY HEM

GRAINLINE

- SIZE 0/2 _____
- SIZE 4/6 _____
- SIZE 8/10 _____
- SIZE 12/14 _____
- SIZE 16/18 _____
- SIZE 20/22 _____
- SIZE 24/26 _____
- SIZE 28/30 _____



POCKET PLACEMENT

SIZE 0/2

SIZE 4/6

SIZE 8/10

SIZE 12/14

SIZE 16/18

SIZE 20/22

SIZE 24/26

SIZE 28/30

All Seam Allowances Included

Main seams: 3/8"

Neckline: 3/8"

Bottom Hem: 1"

CUT ON FOLD OF FABRIC

CUT 1 ON FOLD
FRONT

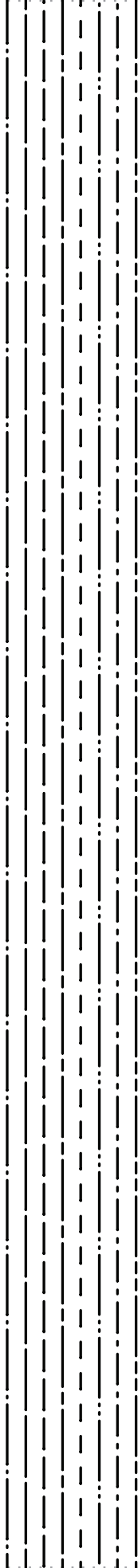
#FabricStoreLenaPattern

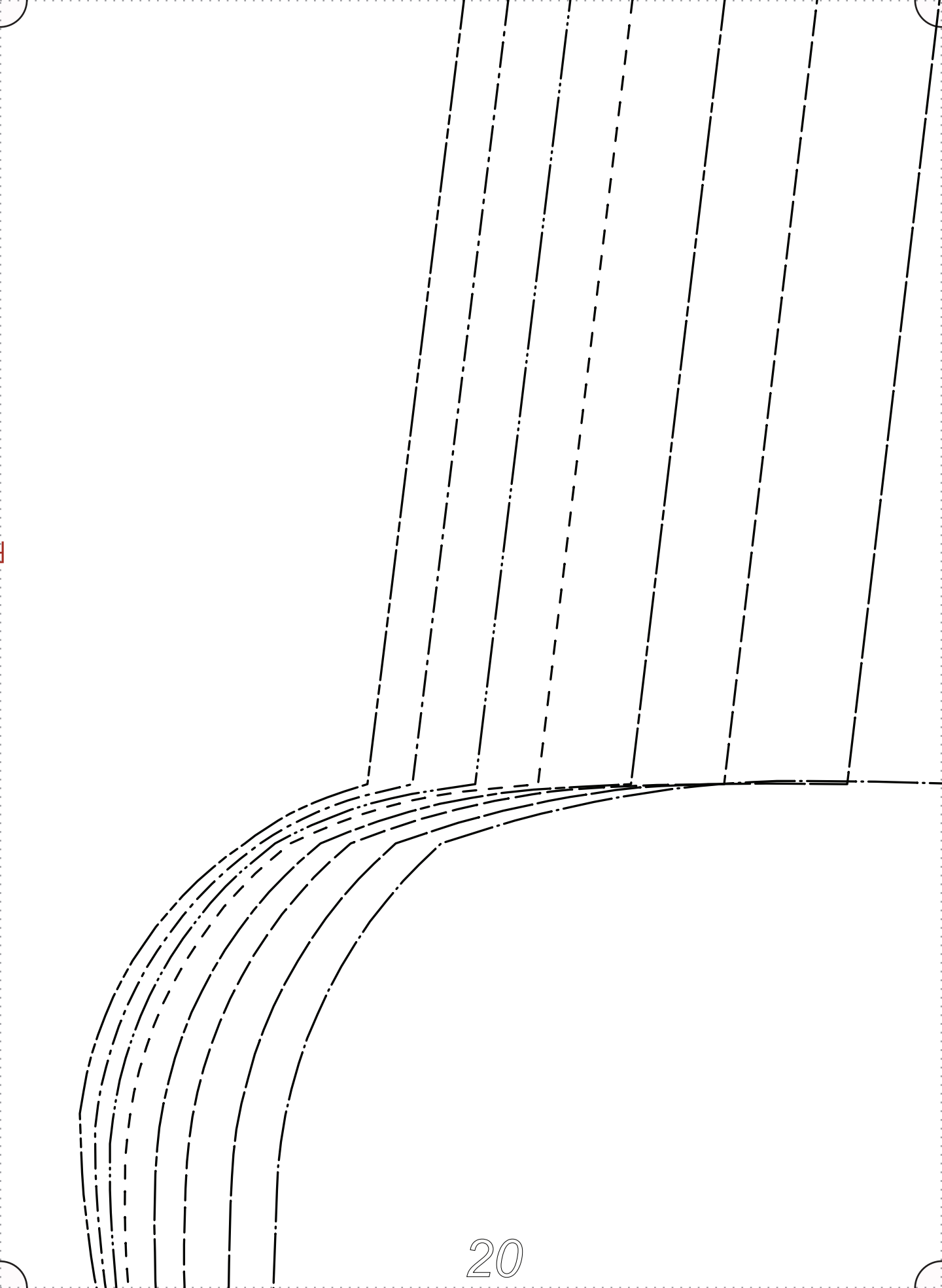
“Lena”

Our linen is nothing short of addicting

FABRICS-STORE.COM

F|S







F|S

FABRICS-STORE.COM

Our linen is nothing short of addicting

“Leena”

#FabricStoreLeenaPattern

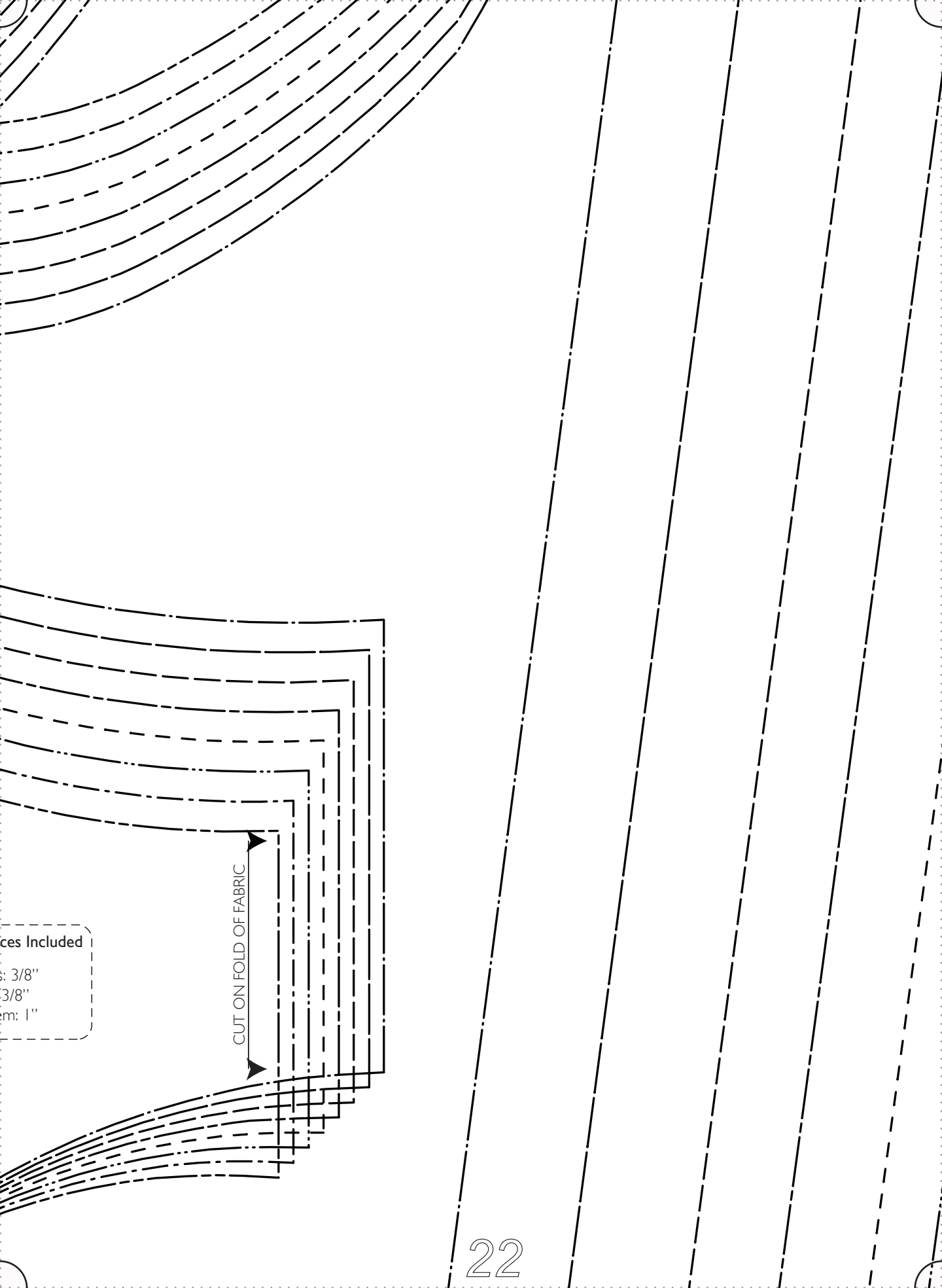
FRONT FACING
CUT 1 ON FOLD
FUSE

All Seam Allowances

Main seams

Neckline:

Bottom Hem



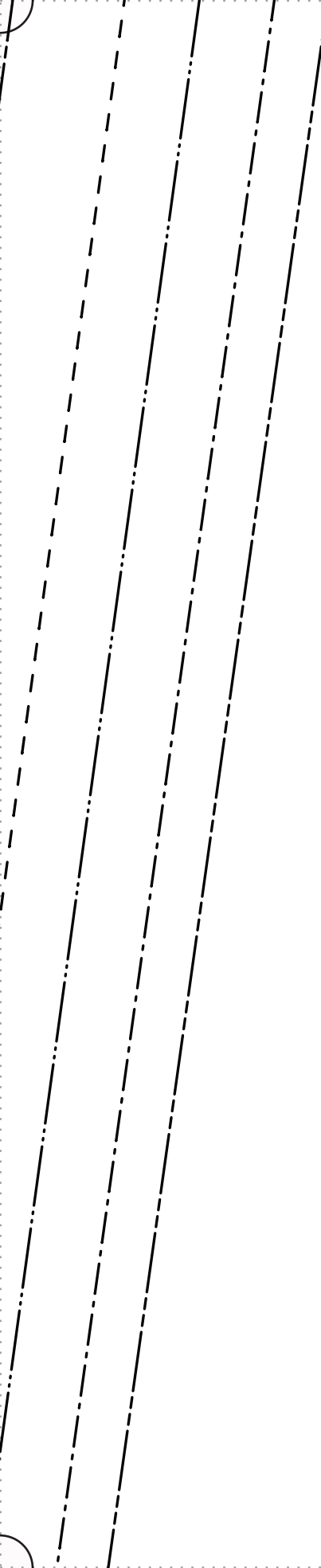
Pieces Included

3/8"

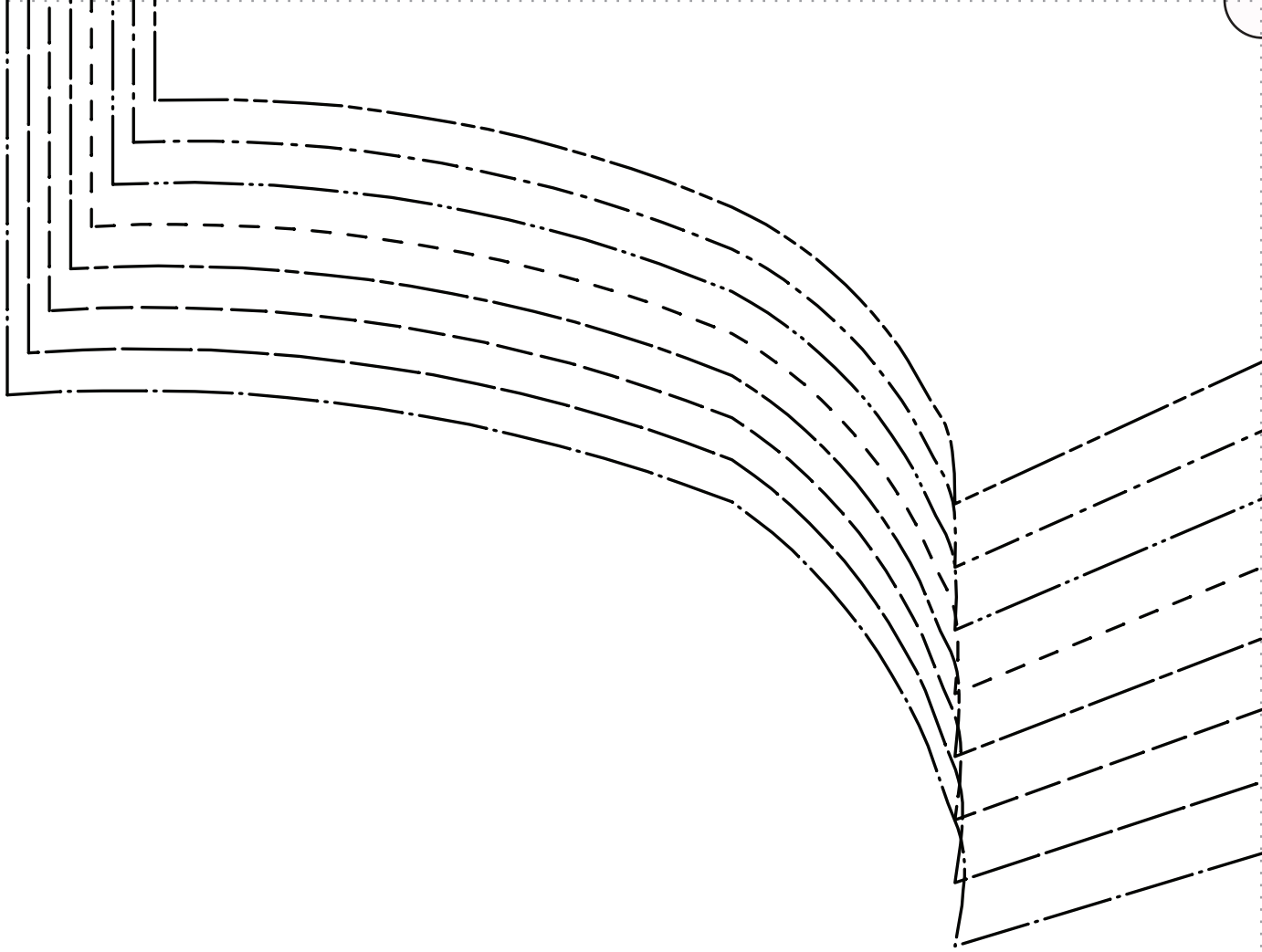
3/8"

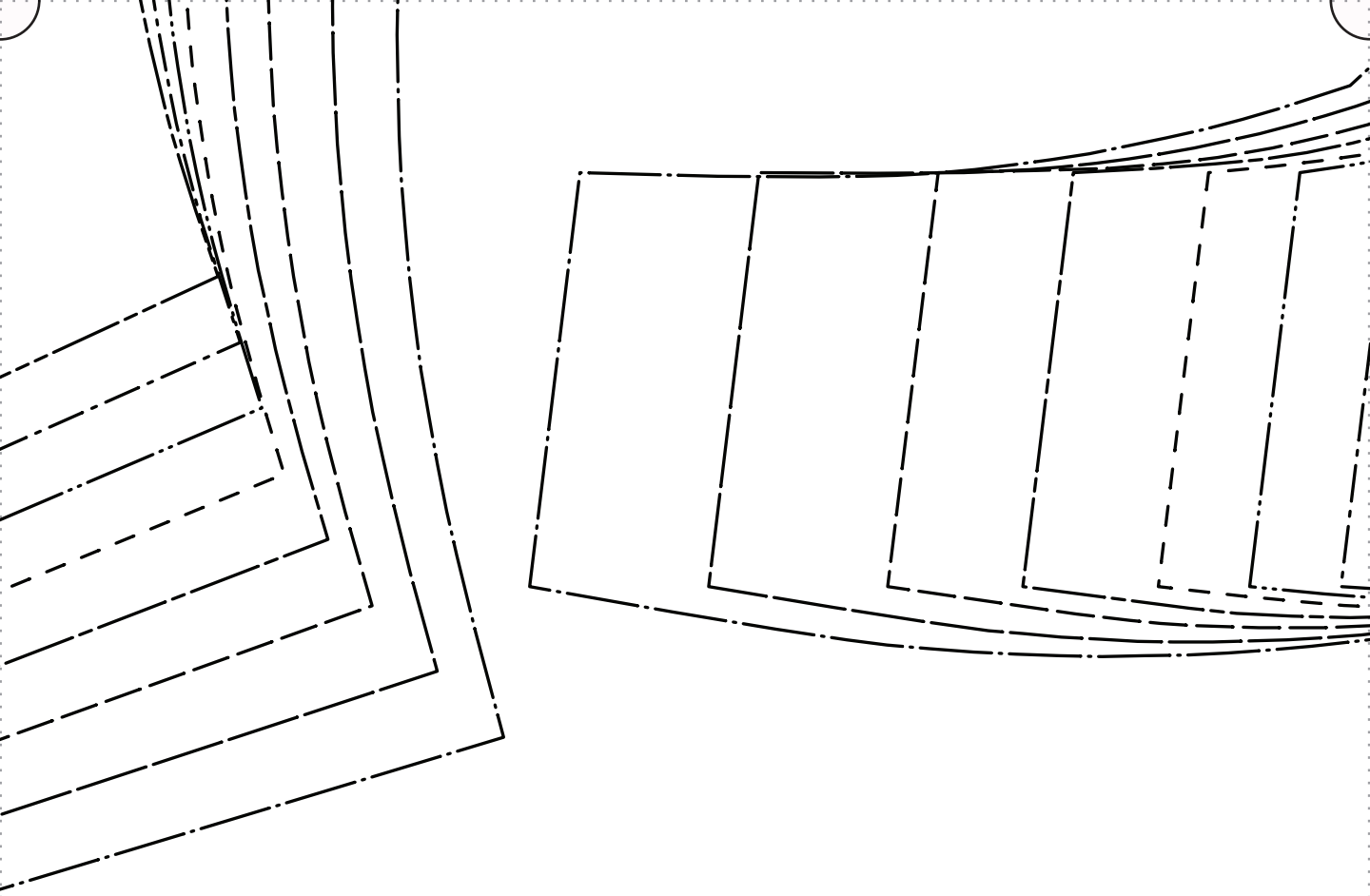
1"

CUT ON FOLD OF FABRIC









- SIZE 0/2 _____
- SIZE 4/6 _____
- SIZE 8/10 _____
- SIZE 12/14 _____
- SIZE 16/18 _____
- SIZE 20/22 _____
- SIZE 24/26 _____
- SIZE 28/30 _____

GRAINLINE

F|S

FABRICS-STORE.COM

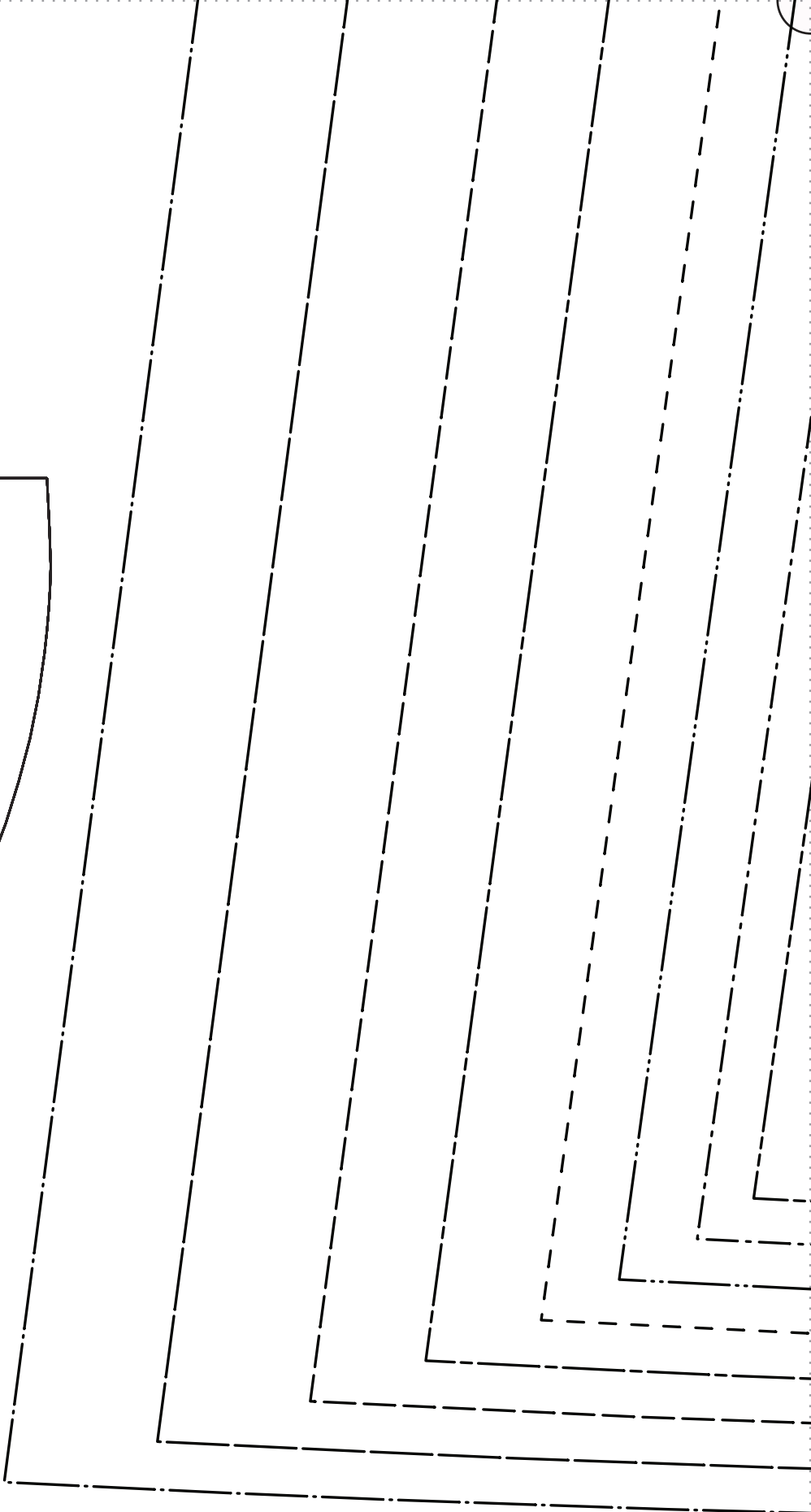
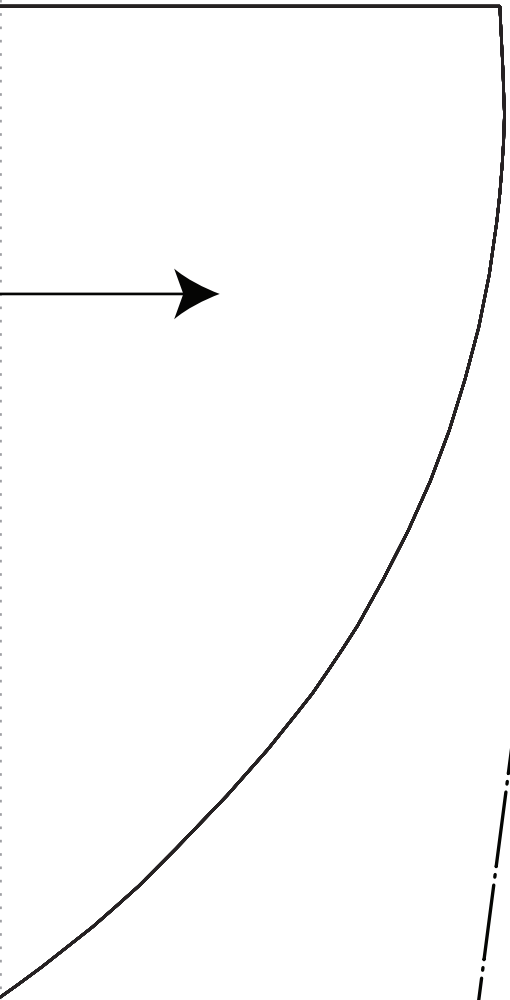
Our linen is nothing short of addicting

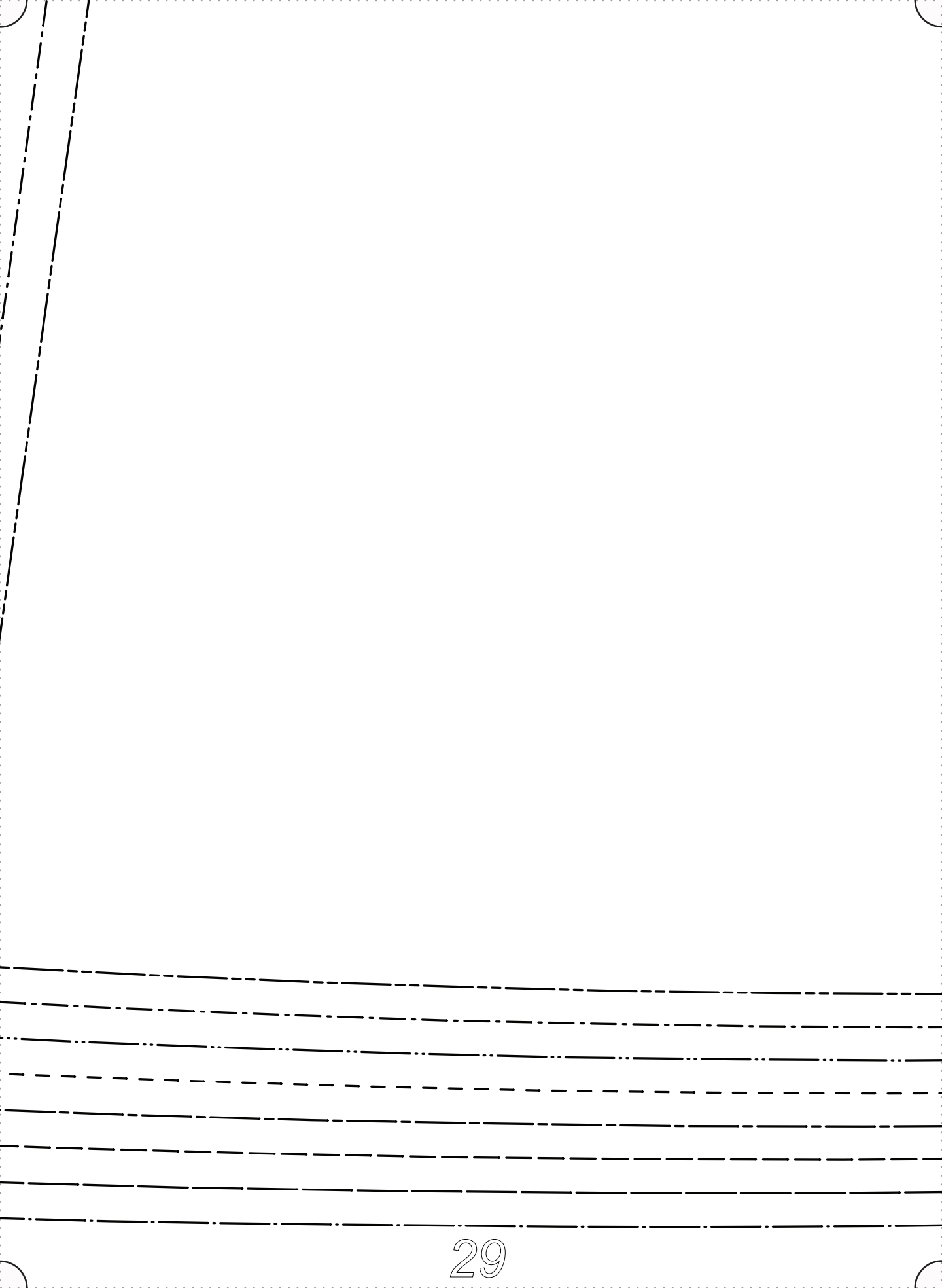
“Leena”

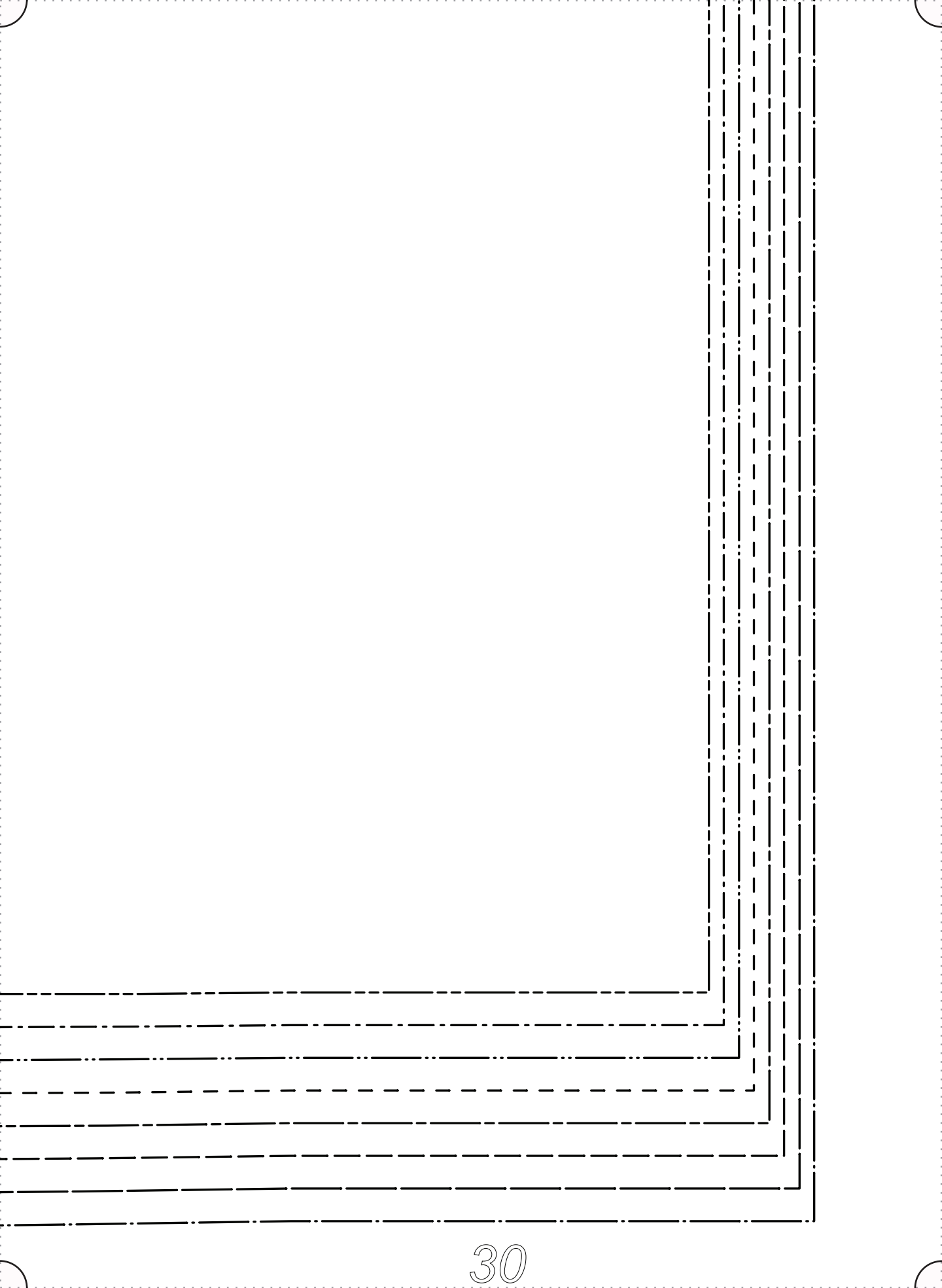
#FabricStoreLeenaPattern

POCKET
CUT 4

(2 MIRROR PAIR)







Thank you

*We work hard on making our patterns beautiful
enough to meet your standards.*

*If you feel like sharing praise or helpful criticism,
please send us your comments to ask@fabrics-store.com*